

# Broader Regional Market Metrics (CTS)

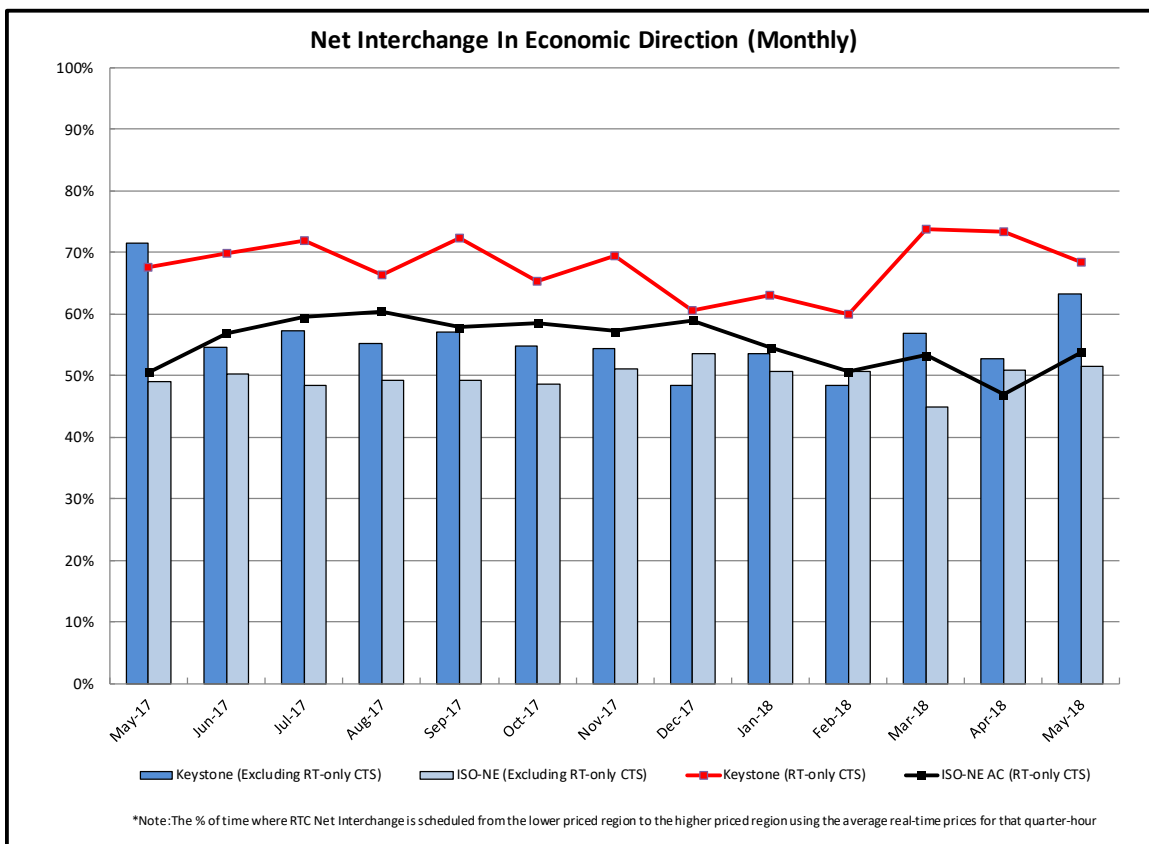
New York Independent  
System Operator

May 2018

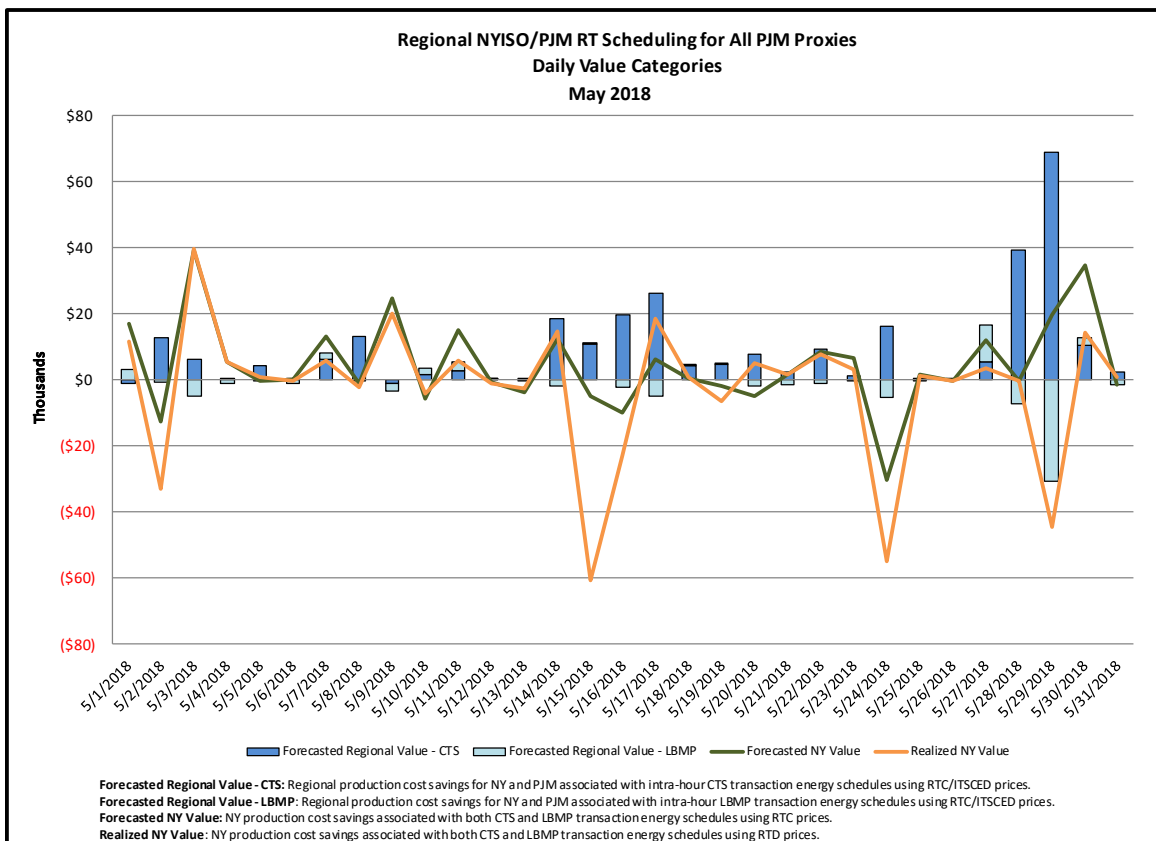
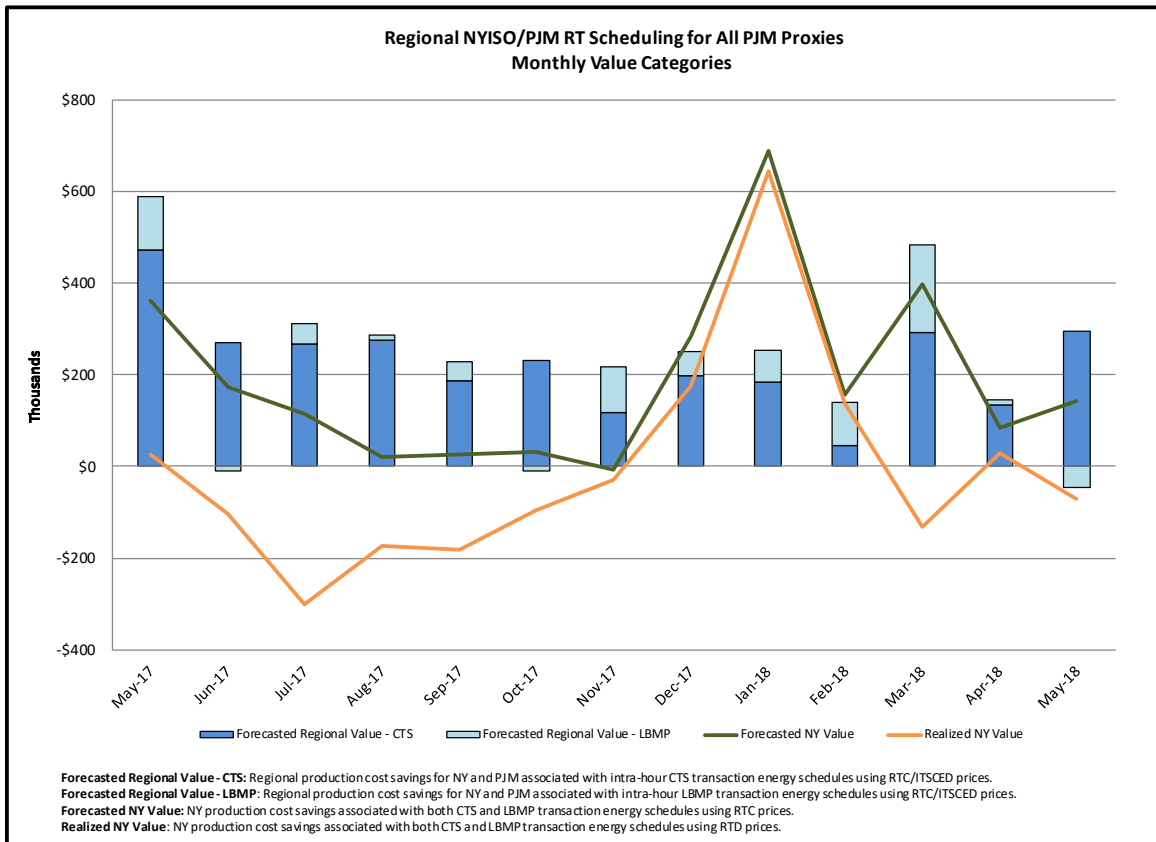
Charts<sup>1</sup> Prepared by NYISO Market Operations – Market Validation

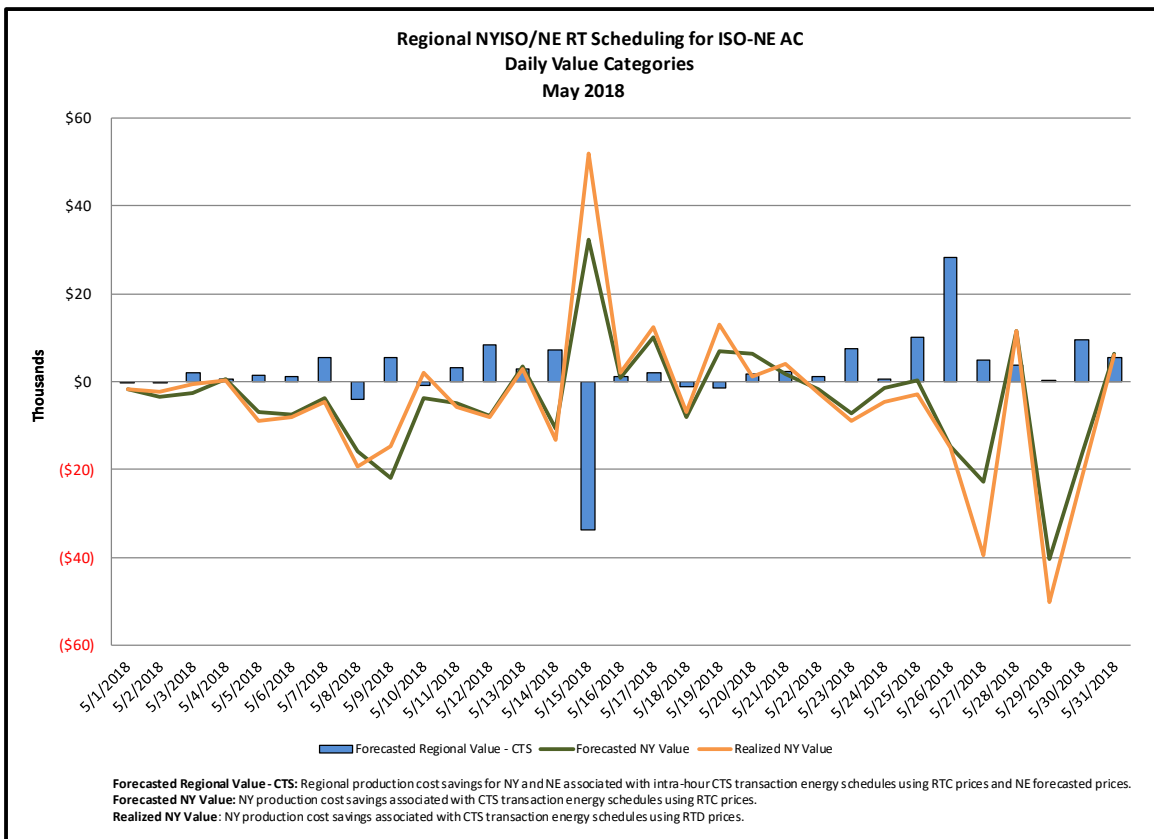
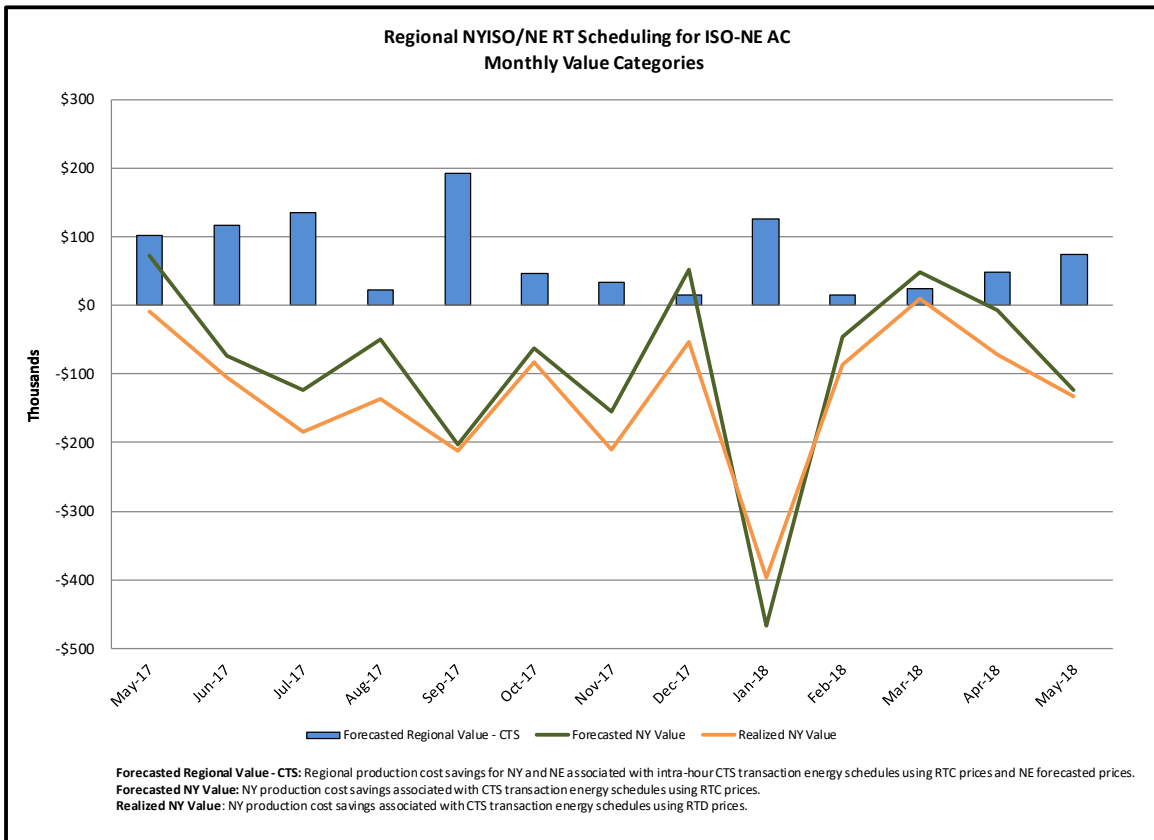
---

<sup>1</sup> All MW Values include the absolute sum of both imports + exports. Wheels have been excluded.







“Forecasted Prices” refer to NYISO’s RTC LBMP and RTO’s LMP used in RTC. “Real-time Prices” refer to NYISO’s RTD LBMP and RTO’s Real-time LMP. Forecasted Prices are used during NYISO’s RTC evaluation to schedule transactions. Real-time Prices are used to settle transactions. Price Spreads are always calculated as NYISO’s LBMP minus RTO’s LMP.

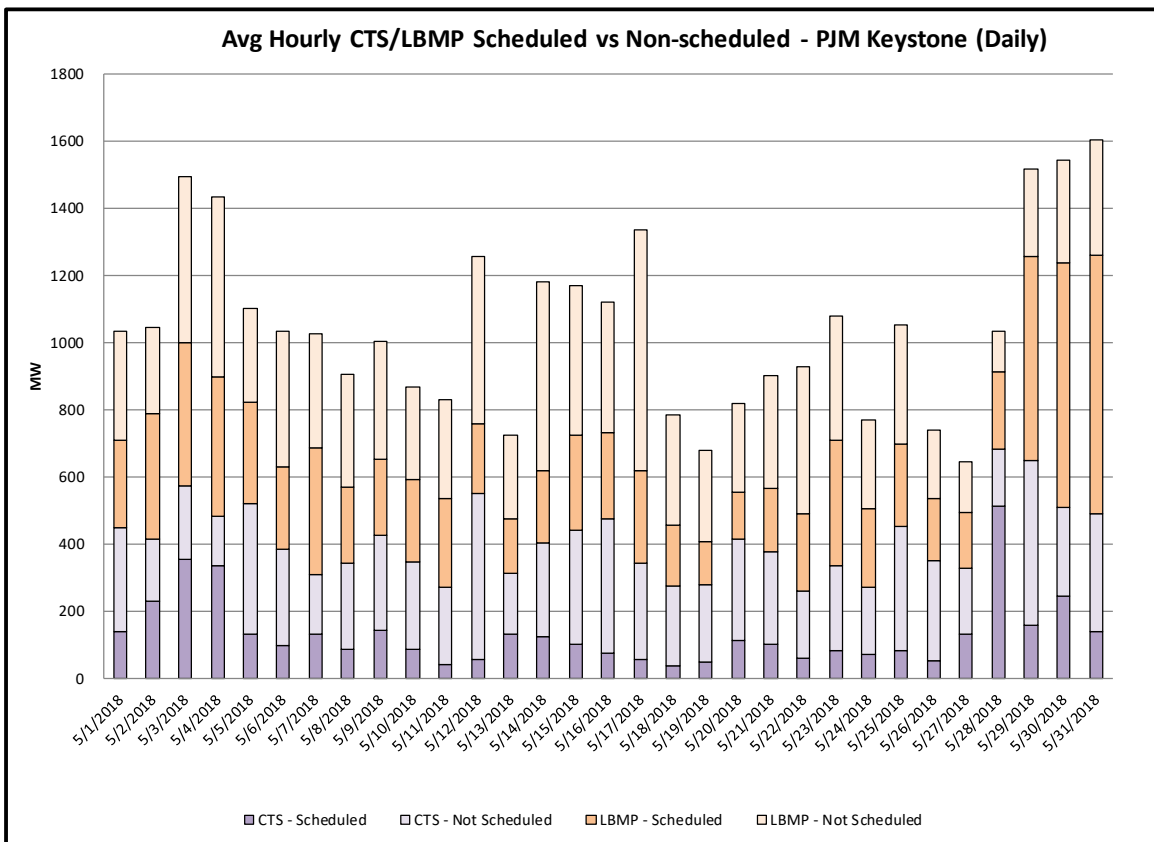
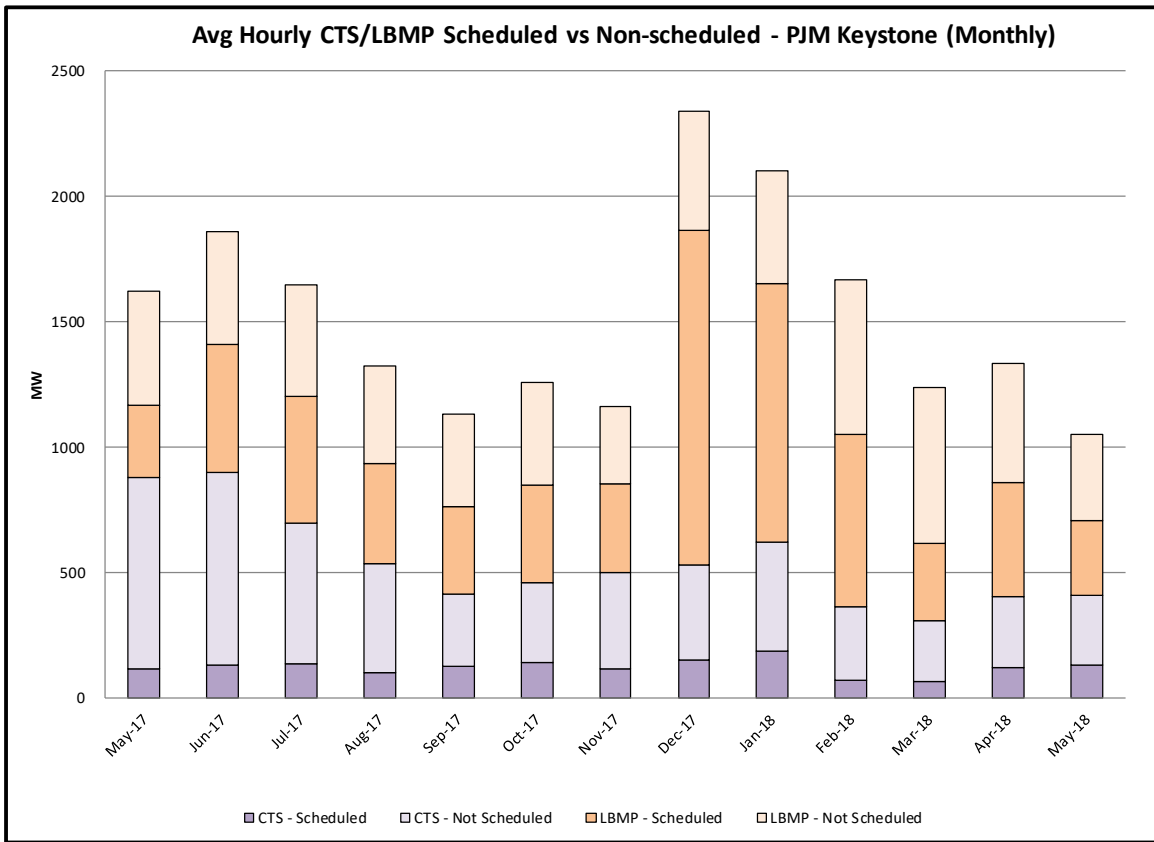


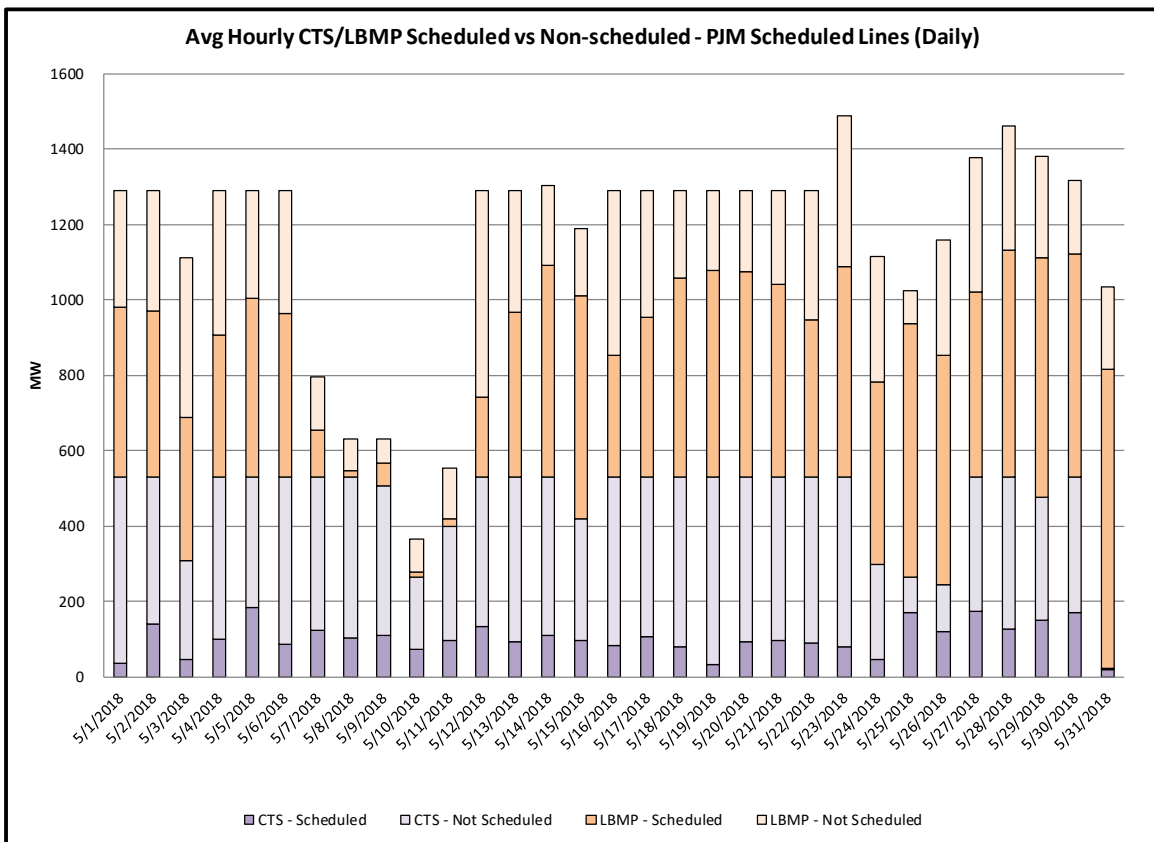
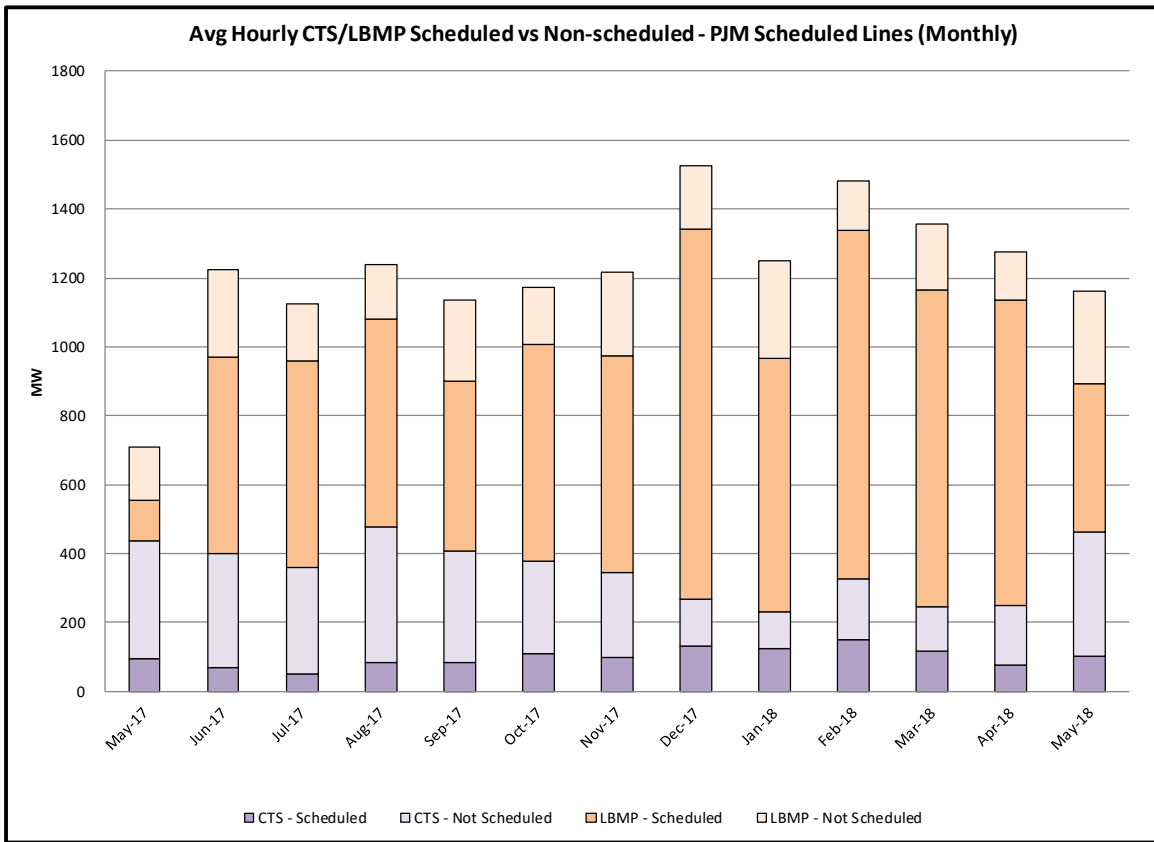


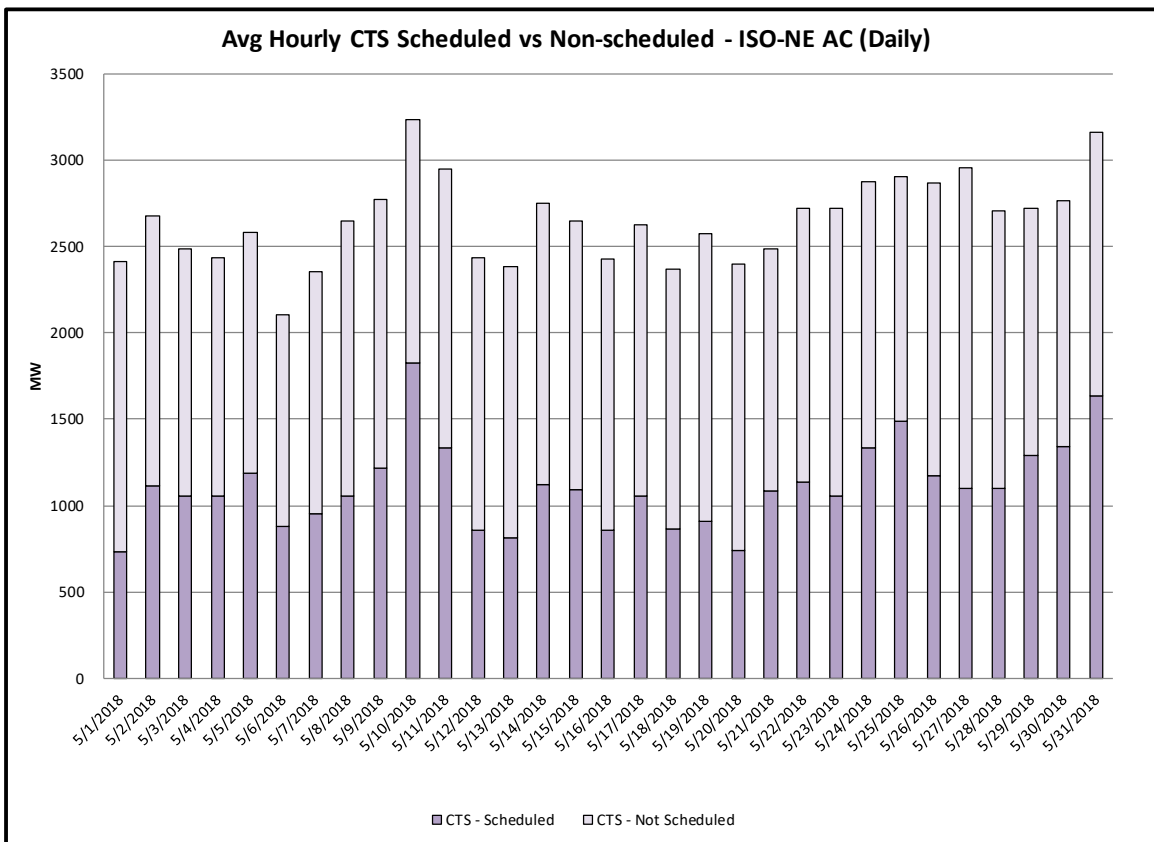
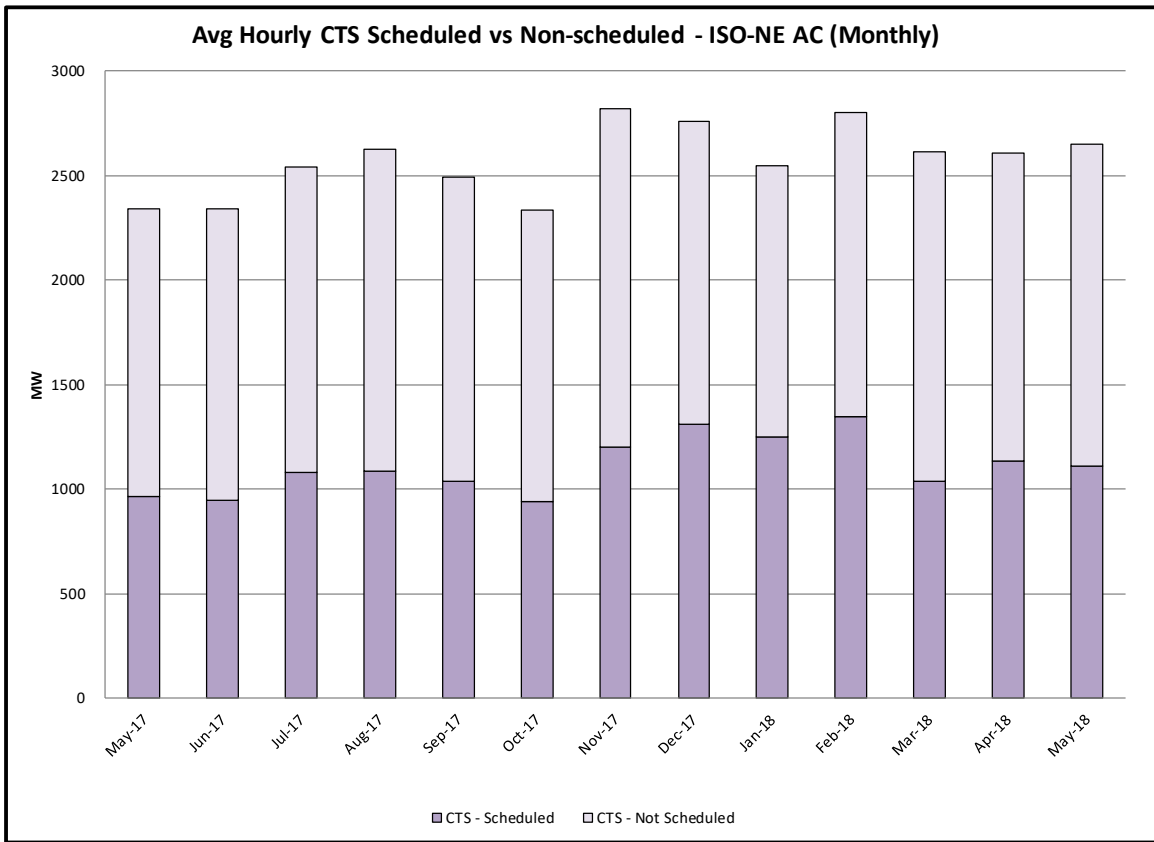
## Regional NYISO RT Scheduling

<u>Category</u>	<u>Description</u>
 Forecasted Regional Value - CTS	Forecasted regional production cost savings from the intra-hour (non-TOH) energy schedule changes <sup>2</sup> on CTS bids (Intra-hour CTS Schedule Changes * [NY RTC LBMP – PJM or ISO-NE’s Forecasted LMP]).
 Forecasted Regional Value - LBMP	Forecasted regional production cost savings from the intra-hour (non-TOH) energy schedule changes <sup>2</sup> on LBMP bids (Intra-hour LBMP Schedule Changes * [NY RTC LBMP - PJM or ISO-NE’s Forecasted LMP]).
 Forecasted NY Value	Forecasted NY production cost savings from the intra-hour (non-TOH) energy schedule changes <sup>2</sup> on CTS and LBMP bids (Total Intra-hour CTS & LBMP Schedule Changes * NY RTC LBMP).
 Realized NY Value	Realized NY production cost savings from the intra-hour (non-TOH) energy schedule changes <sup>2</sup> on CTS and LBMP bids (Total Intra-hour CTS & LBMP Schedule Changes * NY RTD LBMP).

<sup>2</sup> Note: Schedule changes associated with manual Operator actions such as curtailments and/or transaction derates, and that have a significant impact (either positive or negative) to the above metrics, are generally excluded.

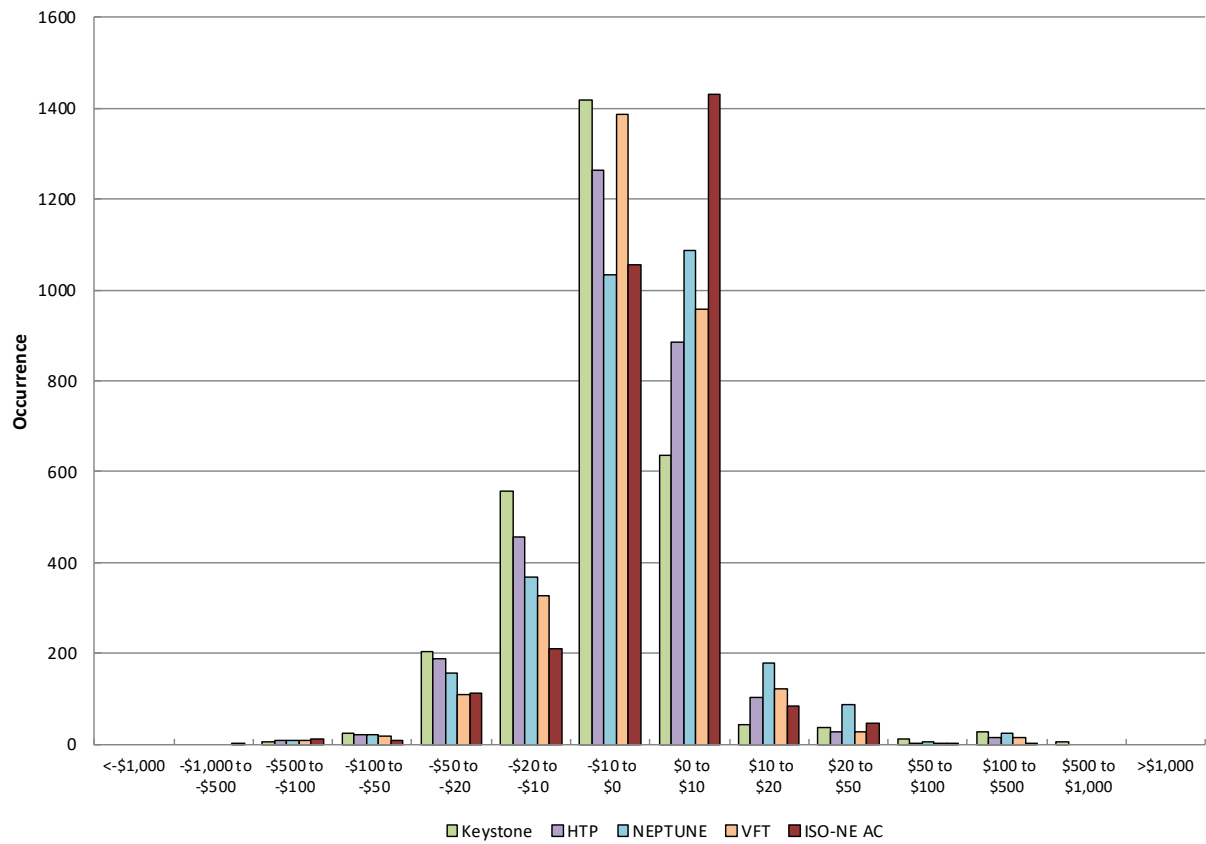








### Forecasted Price Spread Distribution\* (PJM and ISO-NE)



\*NYISO RTC LBMP minus RTO Forecasted LMP

